



MG-2595 Micronized Graphite

General Characteristics

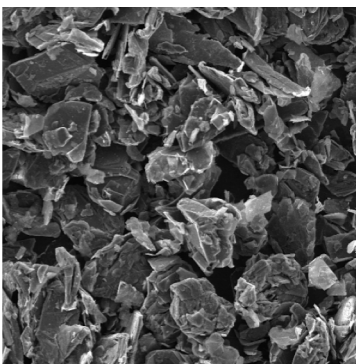
Formula: Carbon
 Aspect: Fine black powder
 Purity: 99.5-99.99%C
 CAS Number: 7782-42-5

Typical Values

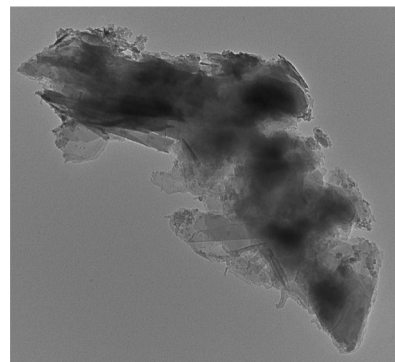
Ash Analysis - Key Elements

Element	Concentration
Al	0.8%
Ca	55.00
Co	5.30
Cr	28.00
Cu	27.00
Fe	0.3%
Mo	41.00
Ni	30.00
Pb	1.80
Sb	<0.10
Si	1.6%
V	23.00
S	110.00
Zn	3.30

Concentrations in PPM
 (except noted with % sign)



SEM image at 970x



TEM image at 18500x

Guaranteed Ash Values

0.1% Maximum LOI

Guaranteed Values

Moisture: 0.5% Max
 D50 (Laser Diffraction) 25 μm

Particle Size Distribution

D90	40.4
D50	23.6
D10	9.4

By using this TDS you accept:

The information contained in this TDS is believed to be correct. However no warranty is made, either express or implied, regarding the accuracy or the results to be obtained by the use of such information. No statement or information in the TDS, or otherwise provided by NovoCarbon, Inc., is intended or should be construed as a recommendation including one to infringe any rights held by a third party. The user of this TDS assumes all risk and liability for loss, damage or injury to property or others, including consequential loss or loss of profit, resulting from the use of or reliance on this information or the material.

