



SPG-20 Spheronized Graphite

General Characteristics

Formula: Carbon
 Aspect: Fine black powder
 Purity: 97.00%C
 CAS Number: 7782-42-5

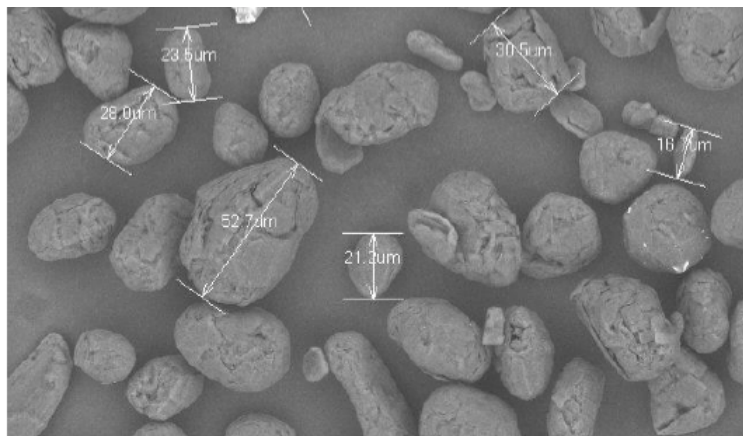
Typical Values

Ash Analysis - Key Elements

| Element | Concentration |
|---------|---------------|
| Al | 0.25 |
| Ca | <0.50 |
| Co | <0.05 |
| Cr | <0.50 |
| Cu | <0.10 |
| Fe | 0.27 |
| Mo | 1.80 |
| Ni | <0.40 |
| Pb | <0.10 |
| Sb | <0.10 |
| Si | 34.00 |
| V | 0.15 |
| S | 1.40 |
| Zn | <0.10 |

Note: Concentrations shown in PPM

| Analysis | Value | Units |
|-------------|-------|-------------------|
| Tap Density | 0.94 | g/cc |
| BET Ads. | 7.69 | m ² /g |
| BET Des. | 7.26 | |
| BET Avg. | 7.48 | |



G17-0053D-0004 2017/03/27 14:40 D4.9 x1.0k 100 um

SEM analysis of SPG-20U at 1000X magnification

Guaranteed Ash Values

0.1% Maximum LOI

Particle Size Distribution

D90 41.43

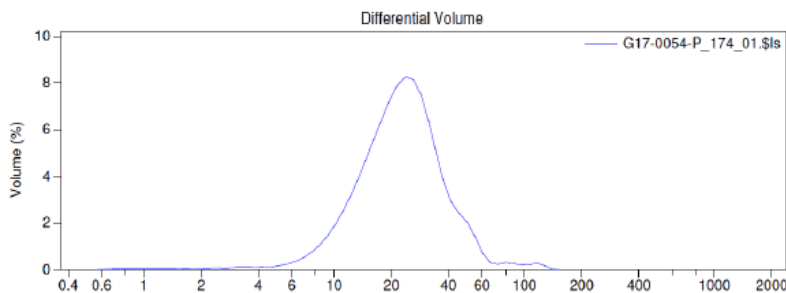
D50 22.75

D10 11.60

Guaranteed Values

Moisture: 0.5% Max

D50 (Laser Diffraction) 23 μm



Particle Size Distribution Analysis of SPG-20

By using this TDS you accept:

The information contained in this TDS is believed to be correct. However no warranty is made, either express or implied, regarding the accuracy or the results to be obtained by the use of such information. No statement or information in the TDS, or otherwise provided by NovoCarbon, Inc., is intended or should be construed as a recommendation including one to infringe any rights held by a third party. The user of this TDS assumes all risk and liability for loss, damage or injury to property or others, including consequential loss or loss of profit, resulting from the use of or reliance on this information or the material.

