



## SPG-20H High Purity Spherical Graphite

### General Characteristics

Formula: Carbon  
 Aspect: Fine black powder  
 Purity: 99.95%C  
 CAS Number: 7782-42-5

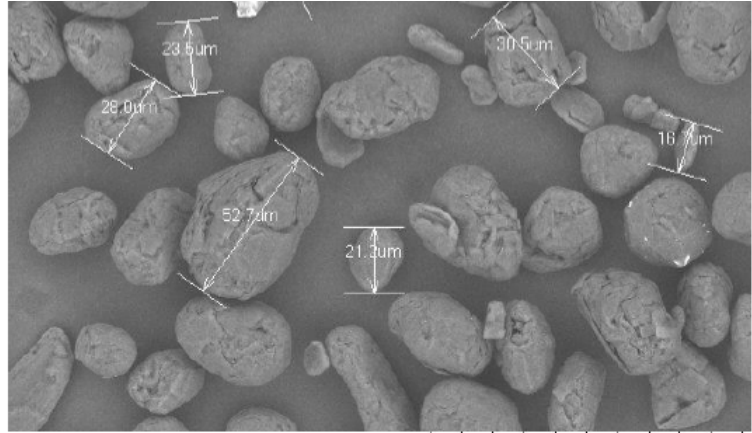
### Typical Values

#### Ash Analysis - Key Elements

Element	Concentration
Al	0.25
Ca	<0.50
Co	<0.05
Cr	<0.50
Cu	<0.10
Fe	0.27
Mo	1.80
Ni	<0.40
Pb	<0.10
Sb	<0.10
Si	34.00
V	0.15
S	1.40
Zn	<0.10

**Note:** Concentrations shown in PPM

Analysis	Value	Units
Tap Density	0.94	g/cc
BET Ads.	7.69	m <sup>2</sup> /g
BET Des.	7.26	
BET Avg.	7.48	



G17-0053D-0004 2017/03/27 14:40 D4.9 x1.0k 100 um

SEM analysis of SPG-20U at 1000X magnification

### Guaranteed Ash Values

0.1% Maximum LOI

### Particle Size Distribution

D90 41.43

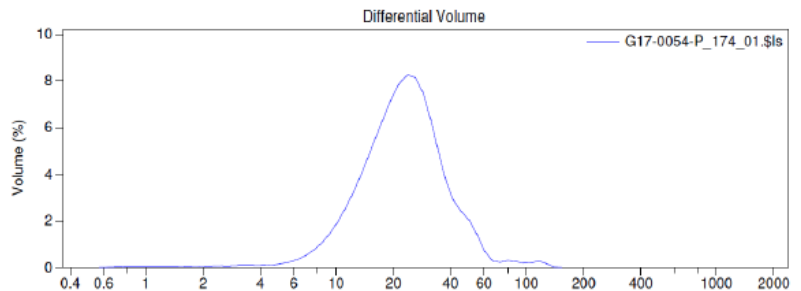
D50 22.75

D10 11.60

### Guaranteed Values

Moisture: 0.5% Max

D50 (Laser Diffraction) 23 μm



Particle Size Distribution Analysis of SPG-20

By using this TDS you accept:

The information contained in this TDS is believed to be correct. However no warranty is made, either express or implied, regarding the accuracy or the results to be obtained by the use of such information. No statement or information in the TDS, or otherwise provided by NovoCarbon, Inc., is intended or should be construed as a recommendation including one to infringe any rights held by a third party. The user of this TDS assumes all risk and liability for loss, damage or injury to property or others, including consequential loss or loss of profit, resulting from the use of or reliance on this information or the material.

